

Recovery Plan Update on Huanglongbing aka HLB / Citrus Greening

Published October 17, 2006

Charla Hollingsworth, Ph.D.
Associate Director
USDA APHIS PPQ S&T
Center for Plant Health, Science & Technology



The Pathogen

Candidatus Liberibacter asiaticus (cLas)

- Alpha proteobacterium
 - Gram-negative
- Insect vectored
 - Psyllid-transmitted
- Phloem-limited
- Prophage
 - Plasmid and chromosomally integrated
 - Highly variable regions with frequent recombination and reassortment



- Zhou, LJ, et al. 2013. Prophage-mediated population dynamics of cLas in plant and insect hosts. IRCHLB Poster. 4-7 Feb. 2013, Orlando, FL.
- Zhang, S. et al., 2010. Ca. *Liberibacter asiaticus* carries an excision plasmid prophage and a chromosomally integrated prophage that becomes lytic in plant infections. doi: 10.1094/MPMI-11-10-0256.
- Zhou, L. et al., 2011. Diversity and plasticity of the intracellular plant pathogen and insect symbiont *Candidatus Liberibacter asiaticus* as revealed by hypervariable prophage genes with intragenic tandem repeats. doi: 10.1128/AEM.05111-11.

Huanglongbing (HLB) symptoms



The Vector

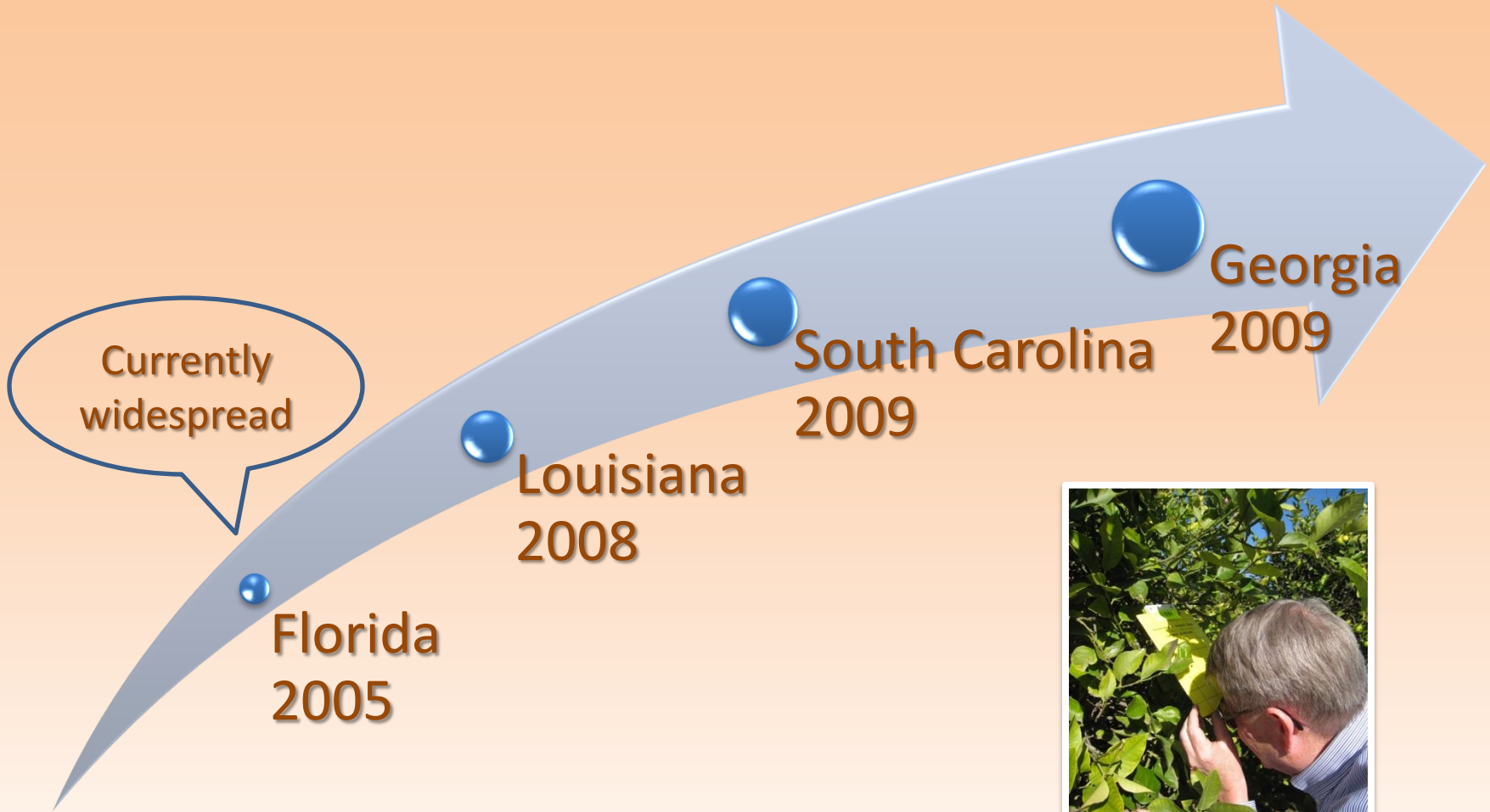
Diaphorina citri, Asian Citrus Psyllid (ACP)

- Females
 - Need new flush
 - Approx. 500-800 eggs in 2 months
 - Optimum
 - temp 29.6C
 - RH > 40%
 - Lifecycle can be 1+ months



Photo by David Bartels

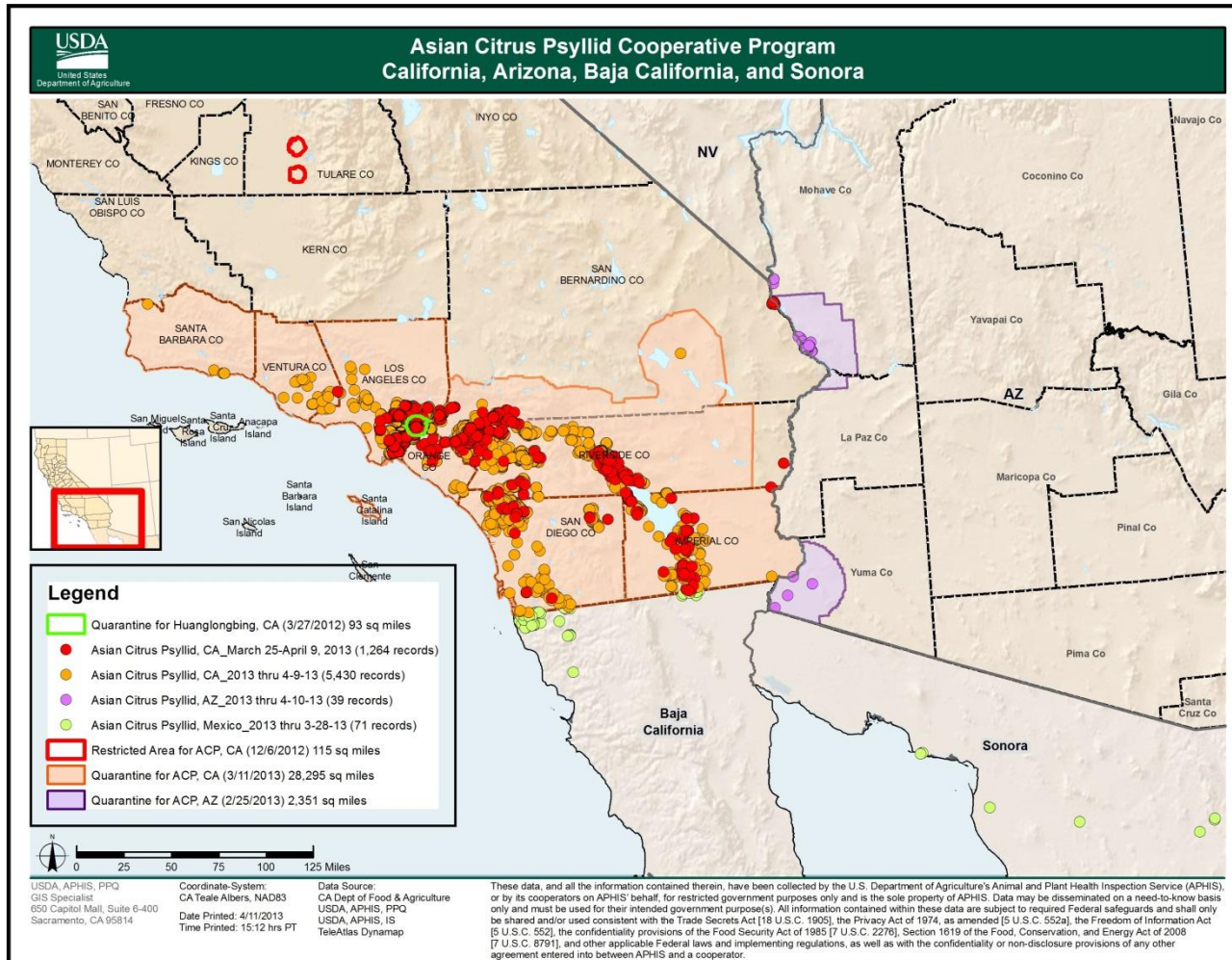
cLas Spread: U.S.



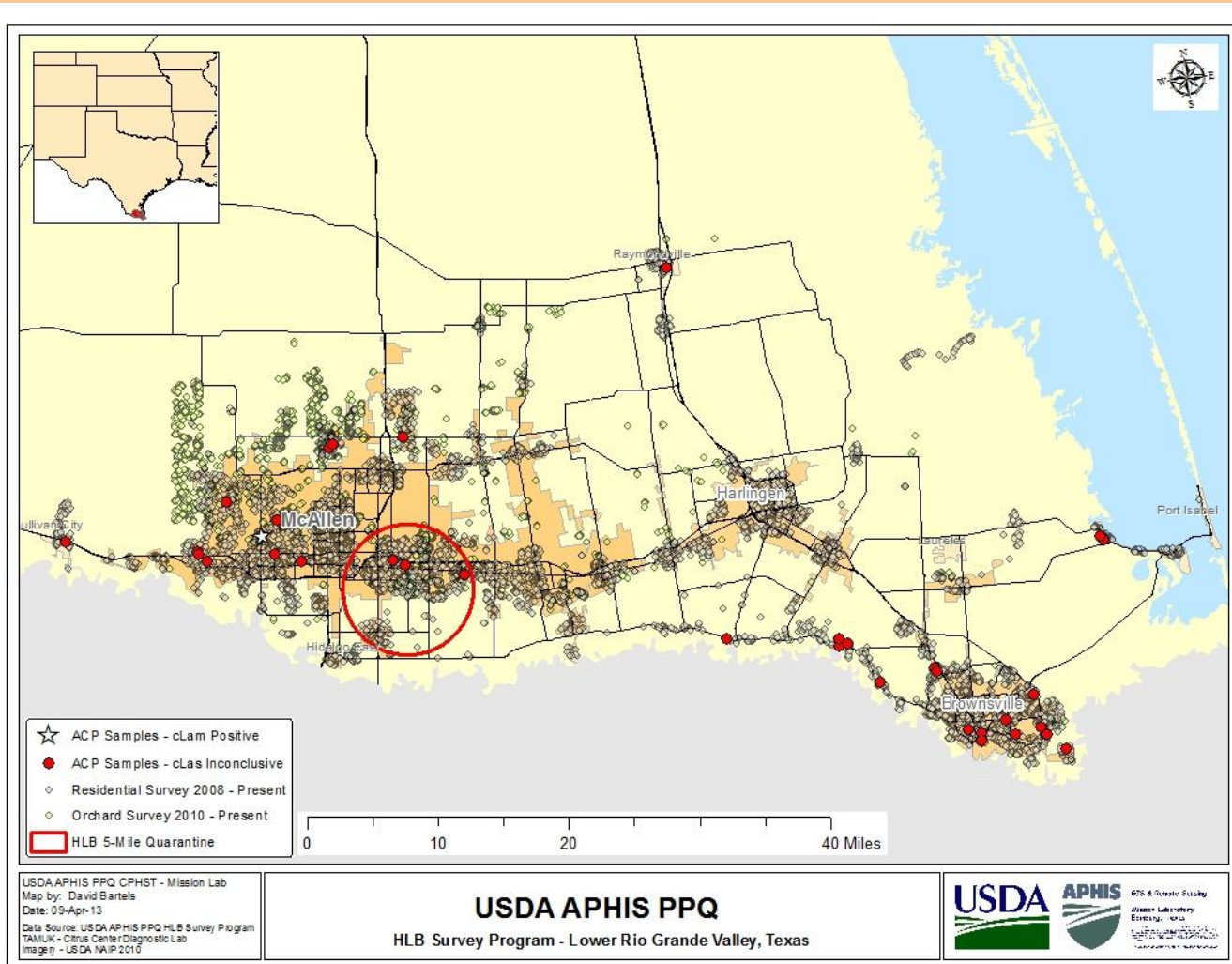
cLas Spread: U.S.



ACP Spread: CA & AZ



ACP Spread: Texas



Monitoring and Detection

- *Plant volatiles and ACP responses.* cLas infected plant host tissues produce methyl salicylate which attracts ACP
 - ACP prefer feeding on newly diseased plants – sufficiently long to acquire cLas
- Diseased plants are deficient in several nutrients (N, Fe, Zn, P)
 - ACP then disperse to non-diseased plants. Hypothesis: seeking a host with increased nutritional content
- Aged, diseased plants are not as a rule attractive to ACP
 - Attraction is increased by applying plant nutritional supplements



Stelinski, LL et al. 2013. Induced release of a plant-defense volatile “deceptively” attracts insect vectors to plants infected with a bacterial pathogen. IRCHLB Poster. 4-7 Feb. 2013, Orlando, FL.

Monitoring and Detection

- *Seasonal shifts in cLas prevalence in ACP.*
Research was conducted in Florida from Jan 2008 to Feb 2012 from 6 sweet orange and 1 lime grove locations
 - cLas prevalence in ACP increased each year at all sites irrespective of management strategy
 - Female ACP cLas prevalence > male ACP
 - Brown-colored ACP cLas prevalence > green-colored ACP
 - Monthly variability
 - Oct through Dec had highest ACP prevalence of cLas



Monitoring and Detection

- *Trap technology.* Chemosensory proteins are under study to identify those molecules that stimulate behavior responses in ACP
 - Commercial experimental product ‘Titan’ induced ACP probing/feeding behavior
 - When mixed with terpenes, these probing levels increased compared with the product alone
 - Male ACP probing behavior was comparable to that expected in the presence of orange jasmine flush
 - Female ACP behavior remained unchanged



Patt, J. et al., 2013. a novel ‘Aromatic’ compound acts synergistically with a naturally occurring monoterpenes to elicit strong behavioral responses in ACP. IRCHLB Poster. 4-7 Feb. 2013, Orlando, FL.

Monitoring and Detection

- MesaTech Molecular Diagnostic Platform
 - Handheld, self-contained, disposable
 - No external hardware requirements
 - Reagents enclosed within device
 - Plant tissue + buffer = test sample
 - Electrical adapter or battery powered (standard 9V battery)
 - Easy to use with a bacterial-based pathogen
 - Minimum user steps between sample and result
 - Sensitivity and specificity comparable to lab-based PCR
 - 2 temperature thermocycler amplification
 - Rapid: < 30 minutes sample-to-result

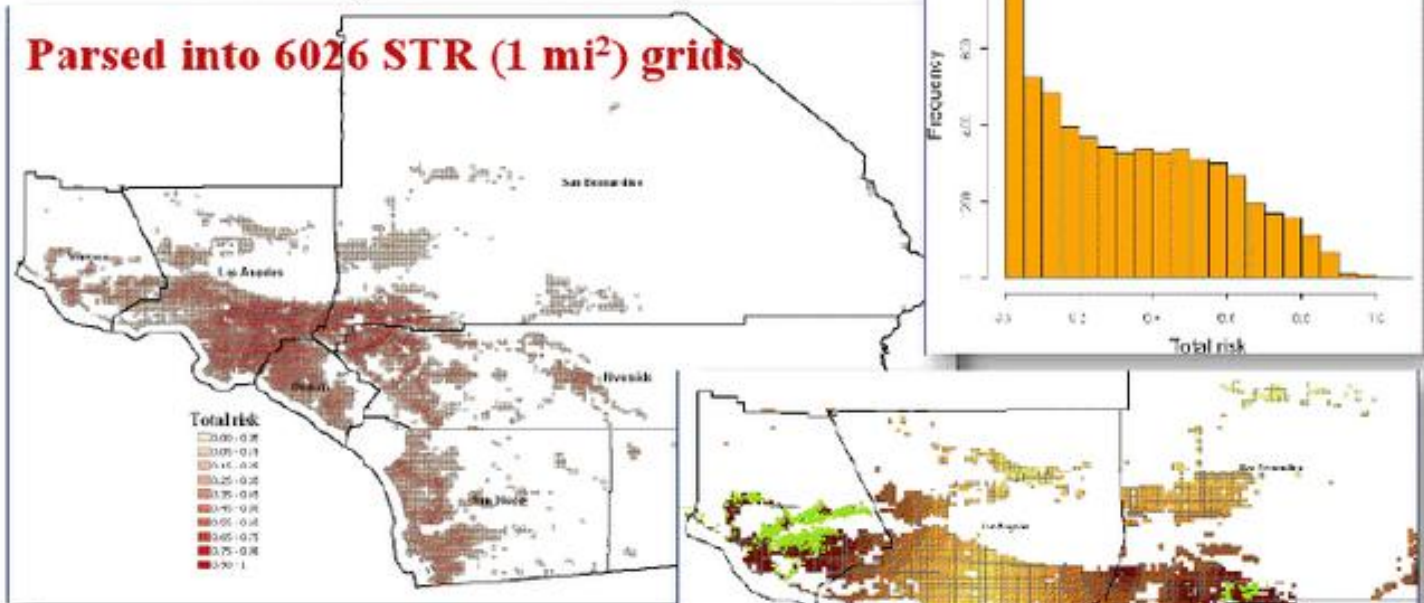


ACP/HLB risk modeling

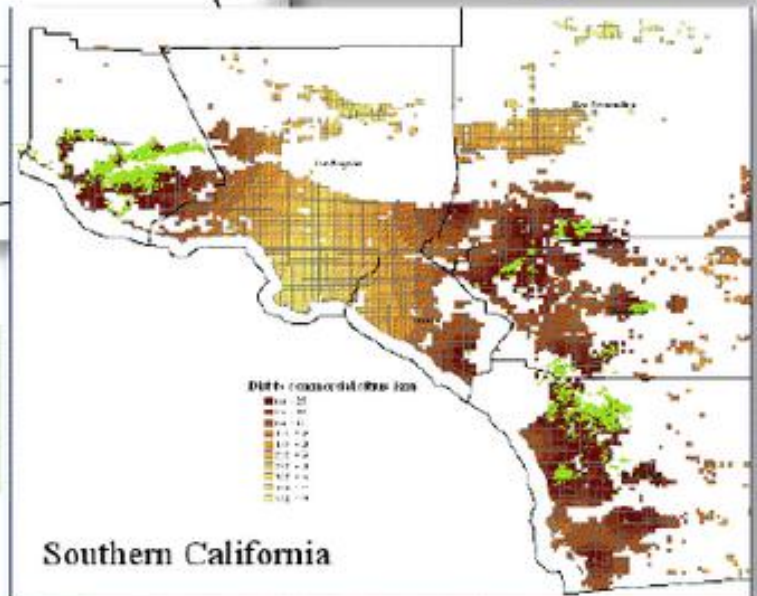
Gottwald, Luo, McRoberts

Total risk (South CA)

Parsed into 6026 STR (1 mi²) grids



Distance to commercial citrus groves
(an additional survey selection criteria)
used to intensity survey near commercial citrus



Mitigation and Disease Management

- *Plant thermotherapy to control disease.*
Exposure to 20-42C for 7-10 days significantly reduced cLas titer in potted diseased citrus.
- cLas titers were significantly reduced
 - In dooryard trees
 - In commercial-use trees in the field, however titers increased again over time
 - Commercial citrus tented in May-June in Florida exhibited greater flushing with lower cLas titers



Mitigation and Disease Management

- Citrus Health Mgmt. Areas
 - Area-wide control of ACP
 - Foliar application of broad-spectrum insecticides are applied during fall and spring to target over-wintering adult ACP
 - Applications are coordinated over a wide area



A screenshot of the University of Florida's Citrus Health Management Areas (CHMA) website. The page features a navigation menu with links like Home, About Extension, Local Offices, FAQ, Success Stories, Jobs, and Weather. The main content area is titled "Citrus Health Management Areas (CHMAs)" and lists active CHMA websites, categorized by county groups: Volusia, Seminole, Lake, Orange, Brevard, Osceola, and Marion; Pasco, Hernando, and Citrus; and Polk, Hillsborough. Each category includes a small map of Florida with the relevant counties highlighted and a list of specific CHMA names. A sidebar on the left contains a list of navigation links such as Citrus Research and Education Center, Citrus Extension Home, Entomology/Nematology, Plant Pathology, Horticulture, Economics, Food Science, Alternative Crops, Extension Publications, Citrus Extension Agents, and Industry Links. A "Related Sites" section on the right lists Citrus Health Management Areas, and a "Resources" section lists various guides and information sources. A search bar and a "GO" button are located at the top right of the page.

Mitigation and Disease Management

- *RNA interference studies* passed to ACP by feeding indicate this technology can induce mortality in the absence of traditionally-known insecticide applications
- dsRNA added to artificial ACP diet at lower concentrations than previously published was effective at killing insects.



Ramos, J et al., 2013. RNA interference screening reveals redox processes to be responsive to low dsRNA doses in ACP. IRCHLB Poster. 4-7 Feb. 2013, Orlando, FL.

Liberibacter inoculation test on 'Rio Red' Grapefruit



**Non-Transgenic buds grafted on
Rootstock with infected buds**

**SoD2 Transgenic buds grafted on
Rootstock with infected buds**

Slide courtesy of Dr. T. Erik Mirkov, Texas A&M University

Mitigation and Disease Management

- Metalized mulch
 - significantly reduced ACP populations compared to a non-mulch control and a white-faced polyethylene mulch treatment
 - Increased soil moisture
 - Reduced weed pressure
 - Increased tree growth rate
 - Additional costs may be offset by increased tree vigor/production



Croxton, S. and Stansly, P. 2013. Metalized polyethylene mulch to reduce incidence of HLB and improve growth of new citrus plantings. IRCHLB Poster. 4-7 Feb. 2013, Orlando, FL.

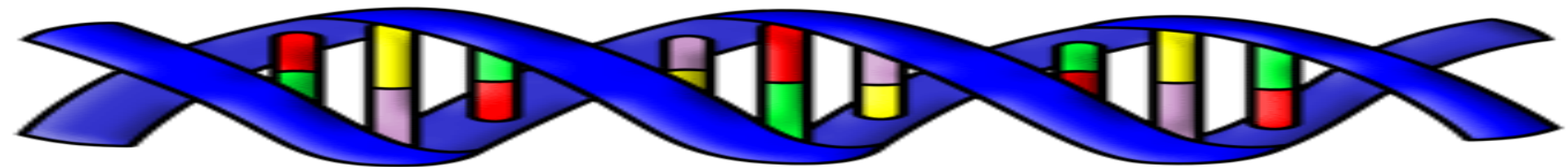
Genome Sequencing and Functional Genomics

Clas (China)

Claf (South Africa)

Clam (Brazil)

ACP



Mitigation and Disease Management



Mr. Jack Thurn also assists with



Master Gardener and tree owner, Mr. Jack Thurn, photographs the vials of *Tamarixia radiata* that are about to be released.



A total of 1100 parasitoids were released inside this field insectary cage.



Flores, D. et al., 2013. Evaluating the biological control of ACP in the Rio Grande Valley of Texas. IRCHLB Poster. 4-7 Feb. 2013, Orlando, FL.

Peer-reviewed, Government, Extension, and Outreach Publications

Bonani JP, Ferrer A, Garzo E, Miranda MP, Appezato-Da-Gloria B & Lopes JRS (2010) Characterization of electrical penetration graphs of the Asian citrus psyllid, *Diaphorina citri*, in sweet orange seedlings. *Entomologia Experimentalis et Applicata* 134: 35-49.

Bové JM (2006) Huanglongbing: a destructive, newly-emerging, century-old disease of citrus. *Journal of Plant Pathology* 88: 7-37.

Boykin LM, De Barro P, Hall DG, Hunter WB, McKenzie CL (2012) Overview of worldwide diversity of *Diaphorina citri* Kuwayama mitochondrial cytochrome oxidase I haplotypes: two Old World lineages and a New World invasion. *Bulletin of Entomological Research* 102: 573-582.

Cen Y, Yang C, Holford P, Beattie GAC, Spooner-Hart RN et al. (2012) Feeding behavior of the Asiatic citrus psyllid, *Diaphorina citri*, on healthy and huanglongbing-infected citrus. *Entomologia Experimentalis et Applicata* 143: 13-22.

Chien CC (1995) The role of parasitoids in the pest management of citrus psyllid. Proceedings of the Symposium on Research and Development of Citrus in Taiwan, pp. 245-261. Taichung, Taiwan.

Chien CC & Chu YJ (1996) Biological control of citrus psyllid, *Diaphorina citri* in Taiwan. *Biological Pest Control in Systems* *Diaphorina citri* in Taiwan. *Biological Pest Control in Systems of Integrated Pest Management* Book Series No. 47 (ed. by and Fertilizer Technology Center and Fertilizer Technology Center G Grey), pp. 93-104. Food and Fertilizer Technology Center for the Asian and Pacific Region, Taipei, Taiwan.

Chiu SC, Aubert B & Chien CC (1988) Attempts to establish *Tetraneura radialis* Watson (Homoptera, Chalcidoidea), primary parasite of *Diaphorina citri* Kuwayama in Taiwan. Proceedings of the 10th Conference of the International Organization of Citrus Virologists, 17-21 November 19 Organization of Citrus Virologists, SM Garnsey & Valencia, Spain (ed. by LW Timmer, SM Garnsey & Navarro), pp. 265-268. International Organization of Citrus Virologists, University of California, Riverside, CA, USA.

De Leon JH, Séaramo M, Gataninina GA, Buenahora I, Cárdenas S et al. (2011) Two separate introductions of Asian citrus psyllid populations found in the American continent. *Annals of the Entomological Society of America* 104: 1392-1398.

Dharajothi B, Verghese A & Tandon PL (1989) Ecological and phenology of *Diaphorina citri* Kuwayama (Homoptera: Psyllidae) with special reference to its spatial distribution and plucking plan. *Entomol* 14: 319-324.

Duan YP, Zhou LJ, Hall DG, Li W, Doddapaneni H et al. (2009) Complete genome sequence of citrus huanglongbing virus, *Candidatus Liberibacter asiaticus* obtained from ruminants. *Molecular Plant-Microbe Interactions* 22: 1011-1020.

Étienne J & Aubert B (1980) Biological control of psyllid of greening disease on Réunion Island. Proceedings of International Organization of Citrus Virologists, Rive International Organization of Citrus Virologists, UP (ed. by EC Cavalari, SM Garnsey & LW Timmer), pp. 245-248. International Organization of Citrus Virologists, University of California, Riverside, CA, USA.

Étienne J, Quilici S, Marival D & Franck A (2001) Biological control of *Diaphorina citri* (Homoptera: Psyllidae) in G

by y el Psilido Asiático de los Cítricos, del 7 al 9 de 2008, Hermosillo, Sonora, p. 11. Available at <http://conviciter.com/huanglongbing/PsilloAsiatico/Memo20Hall.pdf>

Hall DG (2008b) Biological control of *Diaphorina citri* American Plant Protection Organization, *Proceeding Taller Internacional Sobre Huanglongbing y el Psilido de los Cítricos*, del 7 al 9 de Mayo de 2008, Hermosillo p. 7. Available at <http://www.conviciter.com/huanglongbing/Memo9C3%6ADa-8%20Hall.pdf>

Hall DG (2009) An assessment of yellow sticky card traps of the relative abundance of adult *Diaphorina citri*. *Journal of Economic Entomology* 102: 446-452

Hall DG (2010) Biology, history and world status of *Diaphorina citri*. *North American Plant Protection Organization Proceedings of the Second Taller Internacional Sobre Huar el Psilido Asiático de los Cítricos*, 19-23 July 2010 Mérida, Mexico. Available at <http://www.sena.inclases.asp/download.asp?documento=183808>

Hall DG & Gotwald TR (2011) Pest management aimed at curtailing citrus huanglongbing disease. *Pest Management* 22: 189-192.

Hall DG & Hentz MG (2010) Sticky trap and stem protocols for the Asian citrus psyllid (Hemiptera: Psyllidae). *Journal of Economic Entomology* 103: 541-549.

Hall DG & Hentz MG (2011) Seasonal flight activity of citrus psyllid in east central Florida. *Entomol* 16: 1094-1096.

Hall DG & Nguyen R (2010) Toxicity of pesticide *radialis*, a parasitoid of the Asian citrus psyllid. *Entomol* 15: 601-611.

Hall DG & Richardson ML (2012) Toxicity of a parasitoid to the Asian citrus psyllid and two of its natural predators. *Entomol* 17: 1111-1119.

Hall DG, Hentz MG & Ciomperlik MA (2007) Traps and stem tap sampling for monitoring citrus psyllid (*Diaphorina citri*) in citrus. *Entomol* 12: 327-334.

Hall DG, Hentz MG & Adair RC, Jr (2006a) Biology and phenology of *Diaphorina citri* (Hemiptera: Psyllidae) on four host plants. *Journal of Economic Entomology* 94: 1081-1083.

Hall DG, Hentz MG & Stelniski LL (2011) Insecticide resistance in field populations of Asian citrus psyllid in Florida. *Entomol* 16: 1258-1268.

Registo de *Tetraneura radialis* (Watson) (Homoptera: Psyllidae) em São Paulo, Brasil. *Revista de Agricultura* 61: 112-117.

Taniguchi AE & Rogers ME (2010) Suitability of *Clostripidia* (Homoptera: Psyllidae) as a host plant for *Diaphorina citri* (Hemiptera: Psyllidae). *Florida Entomologist* 93: 451-453.

Tsai JH & Liu YH (2000) Biology of *Diaphorina citri* (Homoptera: Psyllidae) on four host plants. *Journal of Economic Entomology* 93: 1721-1725.

Tsai JH, Wang JF & Liu YH (2002) Seasonal abundance of the southern Florida, Florida Entomologist 85: 446-451.

USDA-ARS-NGRIP (2012) Germplasm Resources Information Network - (GRIN) [Online Database]. National Germplasm Resources Laboratory, Beltsville, MD, USA. Available at <http://www.ars-grin.gov/cgi-bin/npgs/html/taxon.pl?24202>

Shatters RG (2011) The psyllid feeding process: composition and biochemistry. *Abstracts of the 2nd International Research Conference on Huanglongbing*, P. 43. Plant Management Network, Orlando, FL, USA. Available at <http://www.plantmanagementnetwork.org/proceedings/>

Stelley LH & Hoy MA (2004) A synchronous rearing method for the Asian citrus psyllid and its parasitoids in quarantine. *Bio-logical Control* 29: 14-23.

Spenn TM, Schumann AW, Rouse B & Ebel B (2011) Foliar nutrition for HLB. *Citrus Industry* 92: 6-10.

Stanley P, Arevalo HA & Qureshi J (2010a) Monitoring methods for Asian citrus psyllid. *Citrus Industry* 91: 20-22.

Stanley P, Qureshi JA & Kostyk BC (2012) Effectiveness ranking of insecticides against Asian citrus psyllid. *Citrus Industry* 93: 6-9.

Su H-J, Choon J-U & Tsai M-J (1986) Citrus greening (*Likidín*) and some viruses and their control trials. *Plant Virus Diseases Book Series* No. 33 (ed. by TC Luang), pp. 143-147. PFTC, Taipei, Taiwan.

Subandiyah S, Niboh N, Sato H, Wagiman F, Tsyumnyu S & Popylinidina I (2000) Isolation and characterization of two entomopathogenic fungi attacking *Diaphorina citri* (Homoptera, Psyllidae) in Indonesia. *Mycoscience* 41: 509-513.

Thomas DB (2012) Comparison of insect vacuums for sampling Asian citrus psyllid (Homoptera: Psyllidae) on citrus trees. *Southwestern Entomologist* 37: 55-60.

Thomas DB & De Leon JH (2011) Is the old world fig, *Ficus carica* L. (Moraceae), an alternative host for the Asian citrus psyllid, *Diaphorina citri* (Homoptera: Psyllidae)? *Florida Entomologist* 94: 1081-1083.

Tiwari S, Mann RS, Rogers ME & Stelniski LL (2011) Insecticide resistance in field populations of Asian citrus psyllid in Florida. *Entomol* 16: 1258-1268.

Torres MI, Nava DE, Gravina S, Costa VA & Parra JRP (2006) *Diaphorina citri* Kuwayama (Homoptera: Psyllidae) in São Paulo, Brazil. *Revista de Agricultura* 61: 112-117.

Tsai JH & Rogers ME (2010) Suitability of *Clostripidia* (Homoptera: Psyllidae) as a host plant for *Diaphorina citri* (Hemiptera: Psyllidae). *Florida Entomologist* 93: 451-453.

Tsai JH & Liu YH (2000) Biology of *Diaphorina citri* (Homoptera: Psyllidae) on four host plants. *Journal of Economic Entomology* 93: 1721-1725.

Tsai JH, Wang JF & Liu YH (2002) Seasonal abundance of the southern Florida, Florida Entomologist 85: 446-451.

USDA-ARS-NGRIP (2012) Germplasm Resources Information Network - (GRIN) [Online Database]. National Germplasm Resources Laboratory, Beltsville, MD, USA. Available at <http://www.ars-grin.gov/cgi-bin/npgs/html/taxon.pl?24202>

Asian citrus psyllid, vector of huanglongbing 17

Viratamath CA & Bhumannavar BX (2002) Biology, ecology and management of *Diaphorina citri* Kuwayama (Homoptera: Psyllidae). *Pest management in Horticultural Ecosystems* 7: 1-27.

Walker AJ, Hall DG & Duan YP (2012) Low incidence of *Diaphorina citri* Plant Disease 95: 872-873.

Weninger EJ & Hall DG (2007) Daily timing of and age at maturation in the Asian citrus psyllid, *Diaphorina citri* (Homoptera: Psyllidae). *Florida Entomologist* 90: 715-722.

Weninger EJ & Hall DG (2008a) Diurnal and seasonal dynamics in the Asian citrus psyllid, *Diaphorina citri* (Homoptera: Psyllidae). *Annals of the Entomological Society of America* 101: 885-892.

Weninger EJ & Hall DG (2008b) Importance of multiple mating to female reproductive output in *Diaphorina citri*. *Physiological Entomology* 33: 316-321.

Weninger EJ, Stelniski LL & Hall DG (2008) Behavioral evidence for a female produced sex attractant in *Diaphorina citri* (Homoptera: Psyllidae). *Entomologia Experimentalis et Applicata* 128: 450-459.

Weninger EJ, Hall DG & Mankin RW (2009a) Vibrational communication between the sexes in *Diaphorina citri* (Homoptera: Psyllidae). *Annals of the Entomological Society of America* 102: 547-555.

Weninger EJ, Stelniski LL & Hall DG (2009b) Roles of olfactory cues, visual cues, and mating status in orientation of *Diaphorina citri* Kuwayama (Homoptera: Psyllidae) to four different host plants. *Environmental Entomology* 38: 225-234.

Weninger EJ, Hall DG, Stover EW, Duan YP & Lee RF (2011) Susceptibility of citrus and citrus-related genotypes to *Diaphorina citri* (Homoptera: Psyllidae). *HortScience* 46: 995-1005.

Wijayapalan IL, Rosa C & Park BW (2011) Oral delivery of double-stranded RNAs and siRNAs induces RNAi effects in the psyllid vector *Diaphorina citri*. *PLoS ONE* 6: e27736.

Xie PH, Su C & Lin ZG (1988) A preliminary study on an entomogenous fungus (*Verticillium lecanii*) of *Diaphorina citri* Kuwayama. *Chinese Journal of Biological Control* 4: 92.

Xu CF, Xia YH, Li KB & Ke C (1988) Further study of the Asian citrus psyllid, *Diaphorina citri* Kuwayama. *Proceedings of the 10th Conference of the International Organization of Citrus Virologists*, 17-21 November 1986, Valencia, Spain (ed. by LW Timmer, SM Garnsey & Navarro), pp. 243-248. International Organization of Citrus Virologists, University of California, Riverside, CA, USA.

Yang Y, Huang M, Beattie GAC, Xia Y, Ouyang G & Xiong J (2006) Distribution, biology, ecology and control of the psyllid vector for China. *International Journal of Pest Management* 52: 343-352.

Zeyen RJ & Berger PH (1990) Is the concept of short retention times for aphid-borne nonpersistent plant viruses sound? *Phytopathology* 80: 769-771.

Ziegler LW & Wolfe HS (1981) *Citrus Greening in Florida* (3rd edn.). University of Florida Press, Gainesville, FL, USA.

