

Discovering Why Plants Get Sick

Plant Detectives



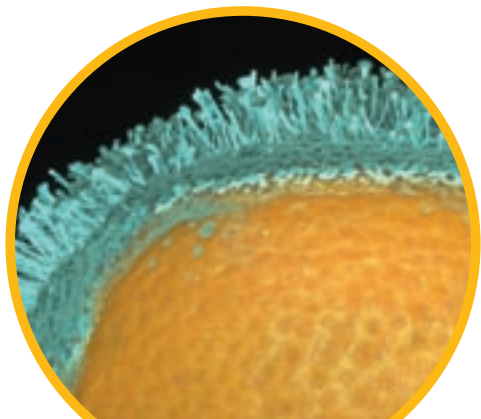
The culprits are often invisible until viewed under a microscope! Then the plant detective (pathologist) can tell, **“Who did it.”**

Smoking mushrooms?? Nope! The smoke is really **thousands of spores** leaving “home” to attack unsuspecting plants.



Blobs of fungus, called corn smut, are often found on ears of corn. Some people like to eat it. Yum!

Whisker Mold on oranges is caused by a species of *Penicillium*. Some strains of this fungus give us the antibiotic penicillin.



Inside the brightly colored spots on these apple leaves are tiny spores that, when released, infect juniper plants causing these **gooey orange tentacles** to form.



Plant Pathologists solve plant health problems.

Learn more at:
The American Phytopathological Society
www.apsnet.org/careers