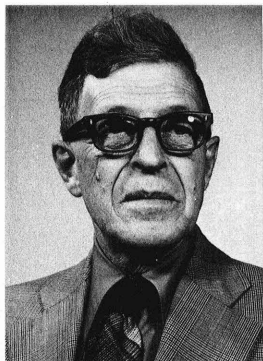


Ralph Anthony Ludwig, 1915–1977

James G. Horsfall



On January 10, 1977, Tony Ludwig died. This came as a great shock to me because he was my good friend and sometime colleague on the Editorial Board of the ANNUAL REVIEW OF PHYTOPATHOLOGY and one of the authors of *Plant Pathology—an Advanced Treatise*. I have traveled with Tony, bent an elbow with him, and visited him and his wife, Luella, in their home. I was fascinated by his droll humor and his penetrating insight as to why things are as they are. Tony Ludwig was a gentleman and a scholar.

He was a long-time member of the American Phytopathological Society, which recognized his talents and made him a Fellow in 1966. He was, of course, a member of the Canadian Phytopathological Society, the Agricultural Institute of Canada, and the Ontario Institute of Agrolgy.

Dr. Ludwig was best known for his work on fusarial wilt diseases and on the toxins produced by *Helminthosporium sativum*. Later he became interested in the action of fungicides and co-authored the book, *The Dithiocarbamates and Related Compounds*. He also edited *The Evolution of Canada's Flora*. The following curriculum vitae was published by the Canadian Phytopathological Society:

Tony was born in Calgary, Alberta, on July 12, 1915. About that time his father left a position in the post office and like many other early settlers in the province at that time homesteaded near the village of Alhambra. Tony occasionally reminisced about his early life in his parents' log cabin. In the little village school at Alhambra he received his elementary schooling. His father became a school teacher and the family moved from the homestead to Medicine Hat. Tony obtained his high school education at Medicine Hat where his father taught English and languages. Tony's undergraduate education was taken at the University of Alberta in Edmonton where he obtained his B.Sc. in 1937, and his M.Sc. in 1939. In the Autumn of 1940 he joined the staff of the Department of Plant Pathology at Macdonald College, McGill University. From that institution he obtained his Ph.D. degree in 1947.

In 1951 he was appointed Head of the Plant Pathology unit at the Pesticide Research Institute of the Canada Department of Agriculture in London, Ontario. From 1959 to 1961 he was Director of the Research Station at Kentville, Nova Scotia. Tony moved to Ottawa in 1961 to become Director of the Plant Research Institute at the Central Experimental Farm. Since 1965 he was primarily involved in the financial administration of the Research Branch.

Tony is gone, but his reputation remains. Plant pathology has lost a great devotee. His wife, Luella, four daughters, and one son survive.